

# purchase order

# Curvy | EddyK

2025 COLLECTION

CUSTOMER: \_\_\_\_\_

CONTACT NAME: \_\_\_\_\_

ADDRESS: \_\_\_\_\_

TEL: \_\_\_\_\_

\_\_\_\_\_

EMAIL: \_\_\_\_\_

\_\_\_\_\_

SALES REP: \_\_\_\_\_

ALL PRICES ARE IN EURO

## Harley

16W  18W  20W  22W  24W  26W  28W  30W  32W

UR521



Ivory

€695.00

Sheath gown in ivory Crepe-Chiffon over satin, slit, buttons to end of train.

[CURVY SIZE CHART](#)

## Angel

16W  18W  20W  22W  24W  26W  28W  30W  32W

UR522



Ivory/Champagne/Dust/Skin

Ivory/Ivory/Skin

€675.00

A-Line gown with ivory lace and sequins over ivory tulle, champagne tulle, dust matte lining, ivory-skin long bishop sleeves, buttons to end of train.

[CURVY SIZE CHART](#)

## Eleonor

16W  18W  20W  22W  24W  26W  28W  30W  32W

UR523



Ivory/Skin

€775.00

Fit-n-Flare gown with beaded ivory lace and sequins, Crepe, buttons to end of waterfall illusion train.

[CURVY SIZE CHART](#)

## Nicole

16W  18W  20W  22W  24W  26W  28W  30W  32W

UR524



Ivory/Champagne/Skin

€895.00

Fit-n-Flare gown in ivory Crepe with pearl beaded embroidery and sequins over champagne-skin tulle side panels, long sleeves, buttons to end of train.

[CURVY SIZE CHART](#)

## Saylor

UR525



**16W** **18W** **20W** **22W** **24W** **26W** **28W** **30W** **32W**

Ivory

€695.00

A-Line gown with ivory lace, Chiffon skirt and swag sleeves, slit, buttons to end of train.

[CURVY SIZE CHART](#)

## Avril

UR526



**16W** **18W** **20W** **22W** **24W** **26W** **28W** **30W** **32W**

Ivory/Champagne/Skin

€695.00

Fit-n-Flare gown with beaded ivory lace and sequins over ivory tulle, champagne-skin unlined back.

[CURVY SIZE CHART](#)

## Elsie

UR527



**16W** **18W** **20W** **22W** **24W** **26W** **28W** **30W** **32W**

Ivory

€585.00

A-Line gown in ivory Crepe with ruched bodice, pockets, buttons to end of train.

[CURVY SIZE CHART](#)

## Pearl

UR528



**16W** **18W** **20W** **22W** **24W** **26W** **28W** **30W** **32W**

Ivory/Champagne/Sand/Skin

€895.00

Sheath gown with pearl beaded, sequined floral ivory tulle, champagne tulle, skin unlined back, sand stretchy lining, flutter sleeves, slit, attached beaded belt.

[CURVY SIZE CHART](#)

## Dylan

UR529



**16W** **18W** **20W** **22W** **24W** **26W** **28W** **30W** **32W**

Ivory

€695.00

Fit-n-Flare ivory Crepe gown, buttons to end of illusion train.

[CURVY SIZE CHART](#)

## Berkly

UR530



**16W** **18W** **20W** **22W** **24W** **26W** **28W** **30W** **32W**

Ivory/Champagne/Skin

€695.00

Fit-n-Flare ivory Crepe gown, ivory lace with sequins, champagne-skin unlined bodice, detachable swag sleeves, buttons to end of illusion train.  
Matching veil: Sierra-VE/DR24-09VE

[CURVY SIZE CHART](#)

## Berkley-SL

16W  18W  20W  22W  24W  26W  28W  30W  32W

UR530SL



Ivory/Skin

€89.00

Detachable long sleeves with ivory lace and sequins, skin tulle.

[CURVY SIZE CHART](#)

## Sierra-VE

o/s

DR2409VE



Ivory/Ivory

€255.00

Cathedral veil with lace and sequince over tulle.

## May

16W  18W  20W  22W  24W  26W  28W  30W  32W

UR531



Ivory/Champagne/Skin  
 Ivory/Ivory/Skin

€725.00

Ballgown with ivory lace and sequins, champagne tulle, skin unlined bodice, buttons to end of train.

[CURVY SIZE CHART](#)

## Clover

16W  18W  20W  22W  24W  26W  28W  30W  32W

UR532



Ivory/Skin

€685.00

A-Line ivory Mikado gown, illusion back with rhinestones and pearl beading, buttons to end of train.

[CURVY SIZE CHART](#)

## Freya

16W  18W  20W  22W  24W  26W  28W  30W  32W

UR533



Ivory

€995.00

Fit-n-Flare gown with all-over beaded embroidery, sequins and scattered silver beading, ivory satin and matte lining, long sleeves, slit, pearl buttons to end of train.

[CURVY SIZE CHART](#)

## Tenley

16W  18W  20W  22W  24W  26W  28W  30W  32W

UR534



Ivory/Skin

€695.00

Sheath gown with ivory lace and sequins, Crepe-Chiffon skirt, illusion long sleeves, buttons to end of train.

# Bria

UR535

- 16W
- 18W
- 20W
- 22W
- 24W
- 26W
- 28W
- 30W
- 32W



- Ivory/Champagne/Dust/Sand/Skin
- Ivory/Ivory/Skin

**€675.00**

A-Line gown with beaded lace and sequins over ivory tulle, champagne tulle, dust matte lining, buttons to end of train.

# top reordering carryover styles

## Sabina

UR462



16W 18W 20W 22W 24W 26W 28W 30W 32W

- Ivory/Champagne/Buff/Skin
- Ivory/Ivory/Skin

€795.00

A-Line gown with ivory lace and sequins over ivory tulle, champagne tulle, buff stretchy lining, skin cleavage.

CURVY SIZE CHART

## Abigail

UR466



16W 18W 20W 22W 24W 26W 28W 30W 32W

- Ivory/Skin

€665.00

€49.00

Matching sleeves  
Abigail-SL | UR466SL

Ivory tulle A-Line gown, skin cleavage.

SISTER GOWN: Angelina | EK1601

CURVY SIZE CHART

## Liz

UR471



16W 18W 20W 22W 24W 26W 28W 30W 32W

- Ivory/Skin

€755.00

Satin ballgown with beaded ivory lace and sequins, skin illusion back, buttons to end of train, pockets.

CURVY SIZE CHART

## Chantal

UR331



16W 18W 20W 22W 24W 26W 28W 30W 32W

- Ivory/Champagne/Dust
- Ivory/Ivory

€695.00

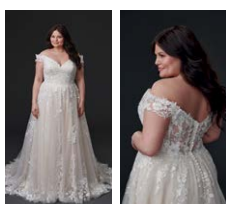
Beaded lace with sequins over ivory tulle, champagne tulle, dust satin lining, buttons to end of train.

SISTER GOWN: Cameron | EK1452

CURVY SIZE CHART

## Anastasia

UR334



16W 18W 20W 22W 24W 26W 28W 30W 32W

- Ivory/Champagne/Dust
- Ivory/Ivory

€785.00

Ivory lace with sequins over ivory tulle, champagne tulle, dust satin lining, buttons to end of train. Matching veil Adora-VE/DR2301VE

SISTER GOWN: Adora | DR2301

CURVY SIZE CHART

## Carlota

### UR335

16W 18W 20W 22W 24W 26W 28W 30W 32W



- Ivory/Mocha/Almond/Skin
- Ivory/Ivory/Skin

€725.00

Ivory lace with sequins over mocha tulle, ivory shimmer tulle, almond stretchy lining, skin unlined back, beaded straps, buttons over zipper. Matching veil Cairo-VE/DR2304VE

SISTER GOWN: Cairo | DR2304

[CURVY SIZE CHART](#)

## Harper

### UR336

16W 18W 20W 22W 24W 26W 28W 30W 32W



- Ivory/Champagne/Dust/Skin
- Ivory/Ivory/Skin

€745.00

Beaded ivory lace with sequins, ivory tulle horsehair layered skirt, dust satin lining, skin illusion long sleeves with beaded lace, buttons over zipper.

[CURVY SIZE CHART](#)

## Geneva

### UR337

16W 18W 20W 22W 24W 26W 28W 30W 32W



- Ivory/Champagne
- Ivory/Ivory

€725.00

Ivory lace with sequins over champagne tulle, champagne satin lining, buttons to end of train.

SISTER GOWN: Ginny | EK1507

[CURVY SIZE CHART](#)

## UR224

### UR224

16W 18W 20W 22W 24W 26W 28W 30W 32W



- Ivory/Champagne/Skin
- Ivory/Ivory/Skin

€575.00

Beaded ivory lace with silver sequins over champagne tulle, champagne lining, skin cleavage

[CURVY SIZE CHART](#)

## UR226

### UR226

16W 18W 20W 22W 24W 26W 28W 30W 32W



- Ivory/Champagne/Dust/Skin
- Ivory/Ivory/Skin

€675.00

Beaded ivory lace with sequins over champagne tulle, Chantilly lace lined bodice, dust lining, skin cleavage, buttons along train

[CURVY SIZE CHART](#)

---

**DESCRIPTION REFERS TO SAMPLE COLOR**

**TOTAL UNITS:** \_\_\_\_\_

**TOTAL AMOUNT:** \_\_\_\_\_

**OBSERVATIONS/INSTRUCTIONS:**

---

---

---

**DATE:** \_\_\_\_\_

**SIGNATURE:** \_\_\_\_\_

**SUBJECT TO FINAL APPROVAL.**

In order to expedite your sample dresses, Eddy K reserves the right to substitute one size, up or down.

A DIVISION OF EDDY K

Via Raffaello Sanzio 1,  
Segrate (MI), Italy 20054

+39 02-2133574  
eddyk@eddyk.com