

# purchase order

# SKY | EddyK

2024 COLLECTION

CUSTOMER: \_\_\_\_\_

CONTACT NAME: \_\_\_\_\_

ADDRESS: \_\_\_\_\_

TEL: \_\_\_\_\_

\_\_\_\_\_

EMAIL: \_\_\_\_\_

\_\_\_\_\_

SALES REP: \_\_\_\_\_

ALL PRICES ARE IN CAD

## Alexa

0  02  04  06  08  10  12  14  16  18  20  22  24  26  28

SKY501



- Ivory/Champagne/Mocha/Skin  
 Ivory/Ivory/Skin

\$1295.00

Ballgown with ivory beaded embroidery and sequins over sequin-embroidered tulle, mocha tulle, champagne matte lining, unlined bodice, crystal buttons.

SIZE CHART B

## Belle

0  02  04  06  08  10  12  14  16  18  20  22  24  26  28

SKY502



- Ivory/Skin

\$1185.00

Fit-n-flare Crepe gown with ivory lace, long sleeves with cuffs, buttons to end of illusion train.

SIZE CHART B

## Noire

0  02  04  06  08  10  12  14  16  18  20  22  24  26  28

SKY503



- Black/Black  
 Ivory/Skin

\$1355.00

Black lace over black Mikado, black tulle unlined back, pockets, buttons to end of illusion train.  
 Matching veil | Noire-VE/SKY503VE

SIZE CHART B

## Noire-VE

o/s

SKY503VE



- Ivory/Ivory

\$295.00

Ivory lace over ivory tulle cathedral veil.

SIZE CHART B

## Blume

0  02  04  06  08  10  12  14  16  18  20  22  24  26  28

SKY504



Ivory/Champagne/Multi/Skin

**\$1495.00**

Multi color lace over ivory Mikado, ivory-champagne-skin unlined back, pockets, buttons to end of illusion train.  
Matching veil | Blume-VE/SKY504VE

SIZE CHART B

## Blume-VE

o/s

SKY504VE



Ivory/Multi

**\$295.00**

Multi color lace over ivory tulle cathedral veil.

SIZE CHART B

## Destiny

0  02  04  06  08  10  12  14  16  18  20  22  24  26  28

SKY505



Ivory/Champagne/Nude/Skin  
 Ivory/Ivory/Skin

**\$1285.00**

Fit-n-Flare gown with heavily beaded ivory lace and sequins over champagne tulle, nude stretchy lining, beaded straps with lace.

SIZE CHART B

## Destiny-SL

S  M  L

SKY505SL



Ivory/Champagne/Skin  
 Ivory

**\$129.00**

Heavily beaded ivory lace detachable swags over champagne and skin tulle with pearl beading fringes.

SIZE CHART B

## Ember

0  02  04  06  08  10  12  14  16  18  20  22  24  26  28

SKY506



Ivory/Champagne/Mocha/Skin

**\$1495.00**

Ballgown with beaded ivory lace and sequins over Chantilly lace, mocha-champagne-skin unlined bodice, spaghetti straps, buttons to end of illusion train, pockets.

SIZE CHART B

## Galaxy

0  02  04  06  08  10  12  14  16  18  20  22  24  26  28

SKY507



Ivory/Champagne/Nude/Mocha/Skin  
 Ivory/Ivory/Skin

**\$1185.00**

Mermaid gown with heavily beaded ivory lace and embroidery over champagne tulle, mocha tulle, nude stretchy lining, skin illusion high neck, crystal buttons to end of train.

SIZE CHART B

## Juniper

### SKY508



0 02 04 06 08 10 12 14 16 18 20 22 24 26 28

Ivory/Skin

**\$1285.00**

Fit-n-Flare gown with ivory lace and sequins over skin unlined bodice, Crepe skirt, buttons to end of waterfall illusion train.

SIZE CHART B

## Karissa

### SKY509



0 02 04 06 08 10 12 14 16 18 20 22 24 26 28

Ivory/Champagne/Mocha/Skin  
 Ivory/Ivory/Skin

**\$1295.00**

Ballgown with ivory lace over champagne tulle, shimmer details on bodice, pearl beading around neckline and back, shimmer tulle skirt, mocha matte lining, unlined bodice, spaghetti straps with floral lace.

SIZE CHART B

## Lotus

### SKY510



0 02 04 06 08 10 12 14 16 18 20 22 24 26 28

Ivory/Nude/Mocha/Skin  
 Ivory/Ivory/Skin

**\$1295.00**

Fit-n-Flare gown with heavily beaded ivory embroidery over mocha tulle, sequin-embroidered tulle, nude stretchy lining, skin illusion high neck, buttons to end of train.

SIZE CHART B

## Lyla

### SKY511



0 02 04 06 08 10 12 14 16 18 20 22 24 26 28

Ivory

**\$995.00**

Fit-n-Flare glitter satin gown, spaghetti straps, slit, buttons to end of train.

SIZE CHART B

## Soleil

### SKY512



0 02 04 06 08 10 12 14 16 18 20 22 24 26 28

Ivory/Champagne/Almond/Skin  
 Ivory/Ivory/Skin

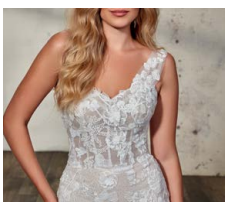
**\$1195.00**

Fit-n-Flare gown with ivory lace and 3D appliqués with beading over champagne tulle, silver glitter tulle, almond stretchy lining, skin unlined bodice.

SIZE CHART B

## Soleil-SL

### SKY512SL



S M L

Ivory/Skin

**\$89.00**

Detachable one shoulder strap with ivory lace over ivory-skin tulle.

# Vitta

SKY513

- 0
- 02
- 04
- 06
- 08
- 10
- 12
- 14
- 16
- 18
- 20
- 22
- 24
- 26
- 28



Ivory

**\$795.00**

Mermaid Mikado gown, buttons to end of train.

SIZE CHART B

# Vitta-DT

SKY513DT

- S
- M
- L



Ivory

**\$695.00**

Mikado detachable train with a lace and sequins illusion cut out hemline.

SIZE CHART B

# Vitta-SL

SKY513SL

- S
- M
- L



Ivory

**\$110.00**

Mikado detachable puff sleeves.

SIZE CHART B

# top reordering carryovers

## Avani SKY430



0  02  04  06  08  10  12  14  16  18  20  22  24  26  28

- Ivory/Champagne/Nude/Mocha/Skin  
 Ivory/Ivory/Skin

**\$1295.00**

Ivory beaded embroidery with sequins and 3D appliqués over textured sparkle tulle, mocha tulle, nude stretchy lining, skin-champagne unlined bodice, buttons over zipper. Matching long sleeve jacket | Avani-JK/SKY430JK.

SIZE CHART B

## Avani-JK SKY430JK



S  M  L

- Ivory/Skin

**\$275.00**

Detachable long sleeve jacket with beaded ivory lace over skin tulle, champagne buttons on cuffs.

SIZE CHART B

## Electra SKY432



0  02  04  06  08  10  12  14  16  18  20  22  24  26  28

- Ivory/Champagne/Skin  
 Ivory/Ivory/Skin

**\$1495.00**

3D ivory embroidery with scattered sequins over ivory tulle with horsehair hem, champagne lining, skin-champagne unlined bodice with Chantilly lace, buttons over zipper.

SIZE CHART B

## Indigo SKY435



0  02  04  06  08  10  12  14  16  18  20  22  24  26  28

- Ivory/Champagne/Mocha/Skin  
 Ivory/Ivory/Skin

**\$1095.00**

Ivory lace with sequins over ivory tulle, champagne tulle with horsehair trim, mocha tulle and lining, champagne-skin unlined bodice, buttons over zipper. Matching veil | DR2210VE/Selena-VE

SIZE CHART B

## Lennox SKY436



0  02  04  06  08  10  12  14  16  18  20  22  24  26  28

- Ivory/Champagne/Nude/Skin  
 Ivory/Ivory/Skin

**\$1295.00**

Beaded ivory lace and sequins with silver beading over textured sparkle tulle, champagne tulle, nude stretchy lining, skin-champagne unlined bodice, beaded spaghetti straps, buttons over zipper.

SIZE CHART B

## Wesley

SKY439



0  02  04  06  08  10  12  14  16  18  20  22  24  26  28

Ivory/Champagne/Dust/Skin

**\$1495.00**

Beaded ivory lace with sequins over ivory tulle, shimmer tulle, dust satin lining, skin-champagne unlined bodice, beaded spaghetti straps, buttons to end of train.

SIZE CHART B

## Dawn

SKY303



0  02  04  06  08  10  12  14  16  18  20  22  24  26  28

Ivory/Champagne/Nude/Skin

Ivory/Ivory/Skin

**\$1795.00**

Ivory beaded all over lace over champagne tulle, nude stretchy lining, lined bodice, skin illusion cleavage and cut-out sides, beaded straps, pearl buttons to end of train.

SIZE CHART B

## Savannah

SKY307



0  02  04  06  08  10  12  14  16  18  20  22  24  26  28

Ivory/Skin

**\$1250.00**

Beaded embroidery with pearls and sequins, Crepe, ivory stretchy lining, Chantilly lace illusion, lined bodice.

SIZE CHART B

## Arya

SKY201



0  02  04  06  08  10  12  14  16  18  20  22  24  26  28  30

Ivory/Champagne/Almond/Skin

Ivory/Ivory/Skin

**\$1195.00**

Embroidery with sequins, tulle, Chantilly lace.

SIZE CHART A

**DESCRIPTION REFERS TO SAMPLE COLOR**

TOTAL UNITS: \_\_\_\_\_

TOTAL AMOUNT: \_\_\_\_\_

**OBSERVATIONS/INSTRUCTIONS:**


---



---



---

DATE: \_\_\_\_\_

SIGNATURE: \_\_\_\_\_

**SUBJECT TO FINAL APPROVAL.**

In order to expedite your sample dresses, Eddy K reserves the right to substitute one size, up or down.

A DIVISION OF EDDY K  
 540 RUE BEAUHARNOIS OUEST, SUITE # 203, MONTREAL, QC, CANADA H2N1L2  
 TEL.: 1-877 6783235 / 514-2239345 FAX: 514-2239346  
 info@eddykcollections.com

Click your sales representative & send your order form.

**SENIOR OPERATIONS MANAGER:**

DAVE CARPENTER | Dave@eddykbridals.com | 516.567.0033

**NATIONAL SALES MANAGER | USA & CANADA:**

KATIE KILBRIDE | Katie@eddykbridals.com | 910.583.6837

**SALES TEAM:**

SCOTT ROSS | East Coast | Scott@eddykbridals.com | 810.240.5027

TAMMY BORS | Southeast & TX | Tammy@eddykbridals.com | 561.309.4064

BETH FREEBURG | West Coast | Beth@eddykbridals.com | 612.702.3466

ROBIN MEDINA | Central States | Robin@eddykbridals.com | 303.810.1661

KAITLIN HORVATH | Canada | kaitlin@eddykbridals.com | 848.219.3622