

purchase order

Curvy | *EddyK*

2025 COLLECTION

CUSTOMER: _____

CONTACT NAME: _____

ADDRESS: _____

TEL: _____

EMAIL: _____

SALES REP: _____

ALL PRICES ARE IN USD

Harley

16W 18W 20W 22W 24W 26W 28W 30W 32W

UR521



Ivory

\$695.00

Sheath gown in ivory Crepe-Chiffon over satin, slit, buttons to end of train.

[CURVY SIZE CHART](#)

Angel

16W 18W 20W 22W 24W 26W 28W 30W 32W

UR522



Ivory/Champagne/Dust/Skin

Ivory/Ivory/Skin

\$695.00

A-Line gown with ivory lace and sequins over ivory tulle, champagne tulle, dust matte lining, ivory-skin long bishop sleeves, buttons to end of train.

[CURVY SIZE CHART](#)

Eleonor

16W 18W 20W 22W 24W 26W 28W 30W 32W

UR523



Ivory/Skin

\$795.00

Fit-n-Flare gown with beaded ivory lace and sequins, Crepe, buttons to end of waterfall illusion train.

[CURVY SIZE CHART](#)

Nicole

16W 18W 20W 22W 24W 26W 28W 30W 32W

UR524



Ivory/Champagne/Skin

\$895.00

Fit-n-Flare gown in ivory Crepe with pearl beaded embroidery and sequins over champagne-skin tulle side panels, long sleeves, buttons to end of train.

[CURVY SIZE CHART](#)

Saylor

UR525



[16W](#) [18W](#) [20W](#) [22W](#) [24W](#) [26W](#) [28W](#) [30W](#) [32W](#)

Ivory

\$695.00

A-Line gown with ivory lace, Chiffon skirt and swag sleeves, slit, buttons to end of train.

[CURVY SIZE CHART](#)

Avril

UR526



[16W](#) [18W](#) [20W](#) [22W](#) [24W](#) [26W](#) [28W](#) [30W](#) [32W](#)

Ivory/Champagne/Skin

\$695.00

Fit-n-Flare gown with beaded ivory lace and sequins over ivory tulle, champagne-skin unlined back.

[CURVY SIZE CHART](#)

Elsie

UR527



[16W](#) [18W](#) [20W](#) [22W](#) [24W](#) [26W](#) [28W](#) [30W](#) [32W](#)

Ivory

\$595.00

A-Line gown in ivory Crepe with ruched bodice, pockets, buttons to end of train.

[CURVY SIZE CHART](#)

Pearl

UR528



[16W](#) [18W](#) [20W](#) [22W](#) [24W](#) [26W](#) [28W](#) [30W](#) [32W](#)

Ivory/Champagne/Sand/Skin

\$895.00

Sheath gown with pearl beaded, sequined floral ivory tulle, champagne tulle, skin unlined back, sand stretchy lining, flutter sleeves, slit, attached beaded belt.

[CURVY SIZE CHART](#)

Dylan

UR529



[16W](#) [18W](#) [20W](#) [22W](#) [24W](#) [26W](#) [28W](#) [30W](#) [32W](#)

Ivory

\$775.00

Fit-n-Flare ivory Crepe gown, buttons to end of illusion train.

[CURVY SIZE CHART](#)

Berkley

UR530



[16W](#) [18W](#) [20W](#) [22W](#) [24W](#) [26W](#) [28W](#) [30W](#) [32W](#)

Ivory/Champagne/Skin

\$695.00

Fit-n-Flare ivory Crepe gown, ivory lace with sequins, champagne-skin unlined bodice, detachable swag sleeves, buttons to end of illusion train.
Matching veil: Sierra-VE/DR24-09VE

[CURVY SIZE CHART](#)

Berkley-SL

16W

18W

20W

22W

24W

26W

28W

30W

32W

UR530SL


 Ivory/Skin

\$89.00

Detachable long sleeves with ivory lace and sequins, skin tulle.

[CURVY SIZE CHART](#)

Sierra-VE

o/s

DR2409VE


 Ivory/Ivory

\$255.00

Cathedral veil with lace and sequince over tulle.

May

16W

18W

20W

22W

24W

26W

28W

30W

32W

UR531


 Ivory/Champagne/Skin
 Ivory/Ivory/Skin

\$775.00

Ballgown with ivory lace and sequins, champagne tulle, skin unlined bodice, buttons to end of train.

[CURVY SIZE CHART](#)

Clover

16W

18W

20W

22W

24W

26W

28W

30W

32W

UR532


 Ivory/Skin

\$695.00

A-Line ivory Mikado gown, illusion back with rhinestones and pearl beading, buttons to end of train.

[CURVY SIZE CHART](#)

Freya

16W

18W

20W

22W

24W

26W

28W

30W

32W

UR533


 Ivory

\$1,095.00

Fit-n-Flare gown with all-over beaded embroidery, sequins and scattered silver beading, ivory satin and matte lining, long sleeves, slit, pearl buttons to end of train.

[CURVY SIZE CHART](#)

Tenley

16W

18W

20W

22W

24W

26W

28W

30W

32W

UR534


 Ivory/Skin

\$695.00

Sheath gown with ivory lace and sequins, Crepe-Chiffon skirt, illusion long sleeves, buttons to end of train.

Bria

UR535

- 16W
- 18W
- 20W
- 22W
- 24W
- 26W
- 28W
- 30W
- 32W



- Ivory/Champagne/Dust/Sand/Skin
- Ivory/Ivory/Skin

\$695.00

A-Line gown with beaded lace and sequins over ivory tulle, champagne tulle, dust matte lining, buttons to end of train.

top reordering carryover styles

Sabina

UR462



16W **18W** **20W** **22W** **24W** **26W** **28W** **30W** **32W**

- Ivory/Champagne/Buff/Skin
- Ivory/Ivory/Skin

\$795.00

A-Line gown with ivory lace and sequins over ivory tulle, champagne tulle, buff stretchy lining, skin cleavage.

[CURVY SIZE CHART](#)

Abigail

UR466



16W **18W** **20W** **22W** **24W** **26W** **28W** **30W** **32W**

- Ivory/Skin

\$695.00

\$49.00

Matching sleeves
Abigail-SL | UR466SL

Ivory tulle A-Line gown, skin cleavage.

SISTER GOWN: Angelina | EK1601

[CURVY SIZE CHART](#)

Liz

UR471



16W **18W** **20W** **22W** **24W** **26W** **28W** **30W** **32W**

- Ivory/Skin

\$785.00

Satin ballgown with beaded ivory lace and sequins, skin illusion back, buttons to end of train, pockets.

[CURVY SIZE CHART](#)

Chantal

UR331



16W **18W** **20W** **22W** **24W** **26W** **28W** **30W** **32W**

- Ivory/Champagne/Dust
- Ivory/Ivory

\$735.00

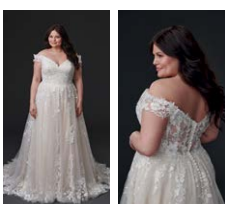
Beaded lace with sequins over ivory tulle, champagne tulle, dust satin lining, buttons to end of train.

SISTER GOWN: Cameron | EK1452

[CURVY SIZE CHART](#)

Anastasia

UR334



16W **18W** **20W** **22W** **24W** **26W** **28W** **30W** **32W**

- Ivory/Champagne/Dust
- Ivory/Ivory

\$795.00

Ivory lace with sequins over ivory tulle, champagne tulle, dust satin lining, buttons to end of train. Matching veil Adora-VE/DR2301VE

SISTER GOWN: Adora | DR2301

[CURVY SIZE CHART](#)

Carlota

UR335

16W 18W 20W 22W 24W 26W 28W 30W 32W



- Ivory/Mocha/Almond/Skin
- Ivory/Ivory/Skin

\$775.00

Ivory lace with sequins over mocha tulle, ivory shimmer tulle, almond stretchy lining, skin unlined back, beaded straps, buttons over zipper. Matching veil Cairo-VE/DR2304VE

SISTER GOWN: Cairo | DR2304

[CURVY SIZE CHART](#)

Harper

UR336

16W 18W 20W 22W 24W 26W 28W 30W 32W



- Ivory/Champagne/Dust/Skin
- Ivory/Ivory/Skin

\$795.00

Beaded ivory lace with sequins, ivory tulle horsehair layered skirt, dust satin lining, skin illusion long sleeves with beaded lace, buttons over zipper.

[CURVY SIZE CHART](#)

Geneva

UR337

16W 18W 20W 22W 24W 26W 28W 30W 32W



- Ivory/Champagne
- Ivory/Ivory

\$755.00

Ivory lace with sequins over champagne tulle, champagne satin lining, buttons to end of train.

SISTER GOWN: Ginny | EK1507

[CURVY SIZE CHART](#)

UR224

UR224

16W 18W 20W 22W 24W 26W 28W 30W 32W



- Ivory/Champagne/Skin
- Ivory/Ivory/Skin

\$595.00

Beaded ivory lace with silver sequins over champagne tulle, champagne lining, skin cleavage

[CURVY SIZE CHART](#)

UR226

UR226

16W 18W 20W 22W 24W 26W 28W 30W 32W



- Ivory/Champagne/Dust/Skin
- Ivory/Ivory/Skin

\$695.00

Beaded ivory lace with sequins over champagne tulle, Chantilly lace lined bodice, dust lining, skin cleavage, buttons along train

[CURVY SIZE CHART](#)

DESCRIPTION REFERS TO SAMPLE COLOR

TOTAL UNITS: _____ TOTAL AMOUNT: _____

OBSERVATIONS/INSTRUCTIONS:

DATE: _____

SIGNATURE: _____

SUBJECT TO FINAL APPROVAL.

In order to expedite your sample dresses, Eddy K reserves the right to substitute one size, up or down.

A DIVISION OF EDDY K
 540 RUE BEAUHARNOIS OUEST, SUITE # 203, MONTREAL, QC, CANADA H2N1L2
 TEL.: 1-877 6783235 / 514-2239345 FAX: 514-2239346
 info@eddykcollections.com

Click your sales representative & send your order form.

SENIOR OPERATIONS MANAGER:

DAVE CARPENTER | Dave@eddykbridals.com | 516.567.0033

NATIONAL SALES MANAGER | USA & CANADA:

KATIE KILBRIDE | Katie@eddykbridals.com | 910.583.6837

SALES TEAM:

SCOTT ROSS | East Coast | Scott@eddykbridals.com | 810.240.5027

TAMMY BORS | Southeast & TX | Tammy@eddykbridals.com | 561.309.4064

BETH FREEBURG | West Coast | Beth@eddykbridals.com | 612.702.3466

ROBIN MEDINA | Central States | Robin@eddykbridals.com | 303.810.1661

KAITLIN HORVATH | Canada | kaitlin@eddykbridals.com | 848.219.3622