

# purchase order

# Curvy | EddyK

2026 COLLECTION

CUSTOMER: \_\_\_\_\_

CONTACT NAME: \_\_\_\_\_

ADDRESS: \_\_\_\_\_

TEL: \_\_\_\_\_

\_\_\_\_\_

EMAIL: \_\_\_\_\_

\_\_\_\_\_

SALES REP: \_\_\_\_\_

ALL PRICES ARE IN USD

Annabelle

16W

18W

20W

22W

24W

26W

28W

30W

32W

UR621



Ivory

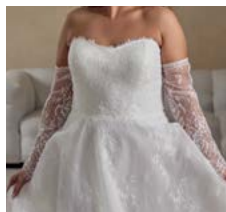
\$695.00

ivory chantilly lace ballgown with eyelash trim along soft scoop neckline, buttons to end of train

[CURVY SIZE CHART](#)

Annabelle-SL  S  M  L

UR621SL



Ivory

\$89.00

chantilly lace long sleeves

[CURVY SIZE CHART](#)

Sunny

16W

18W

20W

22W

24W

26W

28W

30W

32W

UR622



Ivory

\$795.00

fit-n-flare crepe gown with off the shoulder connected swag straps, ivory lace and sequins, buttons to end of illusion train

[CURVY SIZE CHART](#)

Paige

16W

18W

20W

22W

24W

26W

28W

30W

32W

UR623B



Ivory

\$775.00

mermaid brocade gown with draped cat-eye strapless neckline, buttons to end of train

[CURVY SIZE CHART](#)

## Paige

UR623M



Ivory

16W 18W 20W 22W 24W 26W 28W 30W 32W

\$595.00

mermaid mikado gown with draped cat-eye strapless neckline, buttons to end of train

[CURVY SIZE CHART](#)

## Bonnie

UR624



Ivory/Skin

16W 18W 20W 22W 24W 26W 28W 30W 32W

\$685.00

a-line chiffon gown with ruched bodice, skin cleavage, slit, buttons to end of train

[CURVY SIZE CHART](#)

## Bonnie-SL

UR624SL



Ivory

S M L

\$79.00

chiffon bell sleeves

[CURVY SIZE CHART](#)

## Lilah

UR625



Ivory/Champagne/Dust/Skin

Ivory/Ivory/Skin

16W 18W 20W 22W 24W 26W 28W 30W 32W

\$745.00

ballgown with beaded ivory lace and sequins over ivory tulle, champagne tulle, dust matte lining, skin cleavage, buttons to end of train

[CURVY SIZE CHART](#)

## Dotty

UR626



Ivory

16W 18W 20W 22W 24W 26W 28W 30W 32W

\$695.00

ivory mikado a-line gown, ivory corset back, slit, pockets, buttons to end of train

[CURVY SIZE CHART](#)

## Emery

UR627



Ivory

16W 18W 20W 22W 24W 26W 28W 30W 32W

\$595.00

ivory chiffon a-line with ivory lace over ivory tulle, illusion straps and ivory illusion closed back, buttons to end of train

[CURVY SIZE CHART](#)

## Melody

UR628



- Ivory/Champagne/Dust/Skin  
 Ivory/Ivory/Skin

\$755.00

ballgown with off the shoulder connected swag straps, beaded ivory lace and sequins over ivory tulle, champagne tulle, dust matte lining, skin cleavage, slit, buttons to end of train

[CURVY SIZE CHART](#)

[16W](#) [18W](#) [20W](#) [22W](#) [24W](#) [26W](#) [28W](#) [30W](#) [32W](#)

## Jane

UR629



- Ivory

\$795.00

fit-n-flare crepe gown with beaded ivory lace, sequins and pearls, buttons to end of illusion train

[16W](#) [18W](#) [20W](#) [22W](#) [24W](#) [26W](#) [28W](#) [30W](#) [32W](#)

## Brielle

UR630



- Ivory/Skin

\$795.00

fit-n-flare gown in ivory lace with sequins over ivory tulle, organza, ivory stretchy lining, buttons to end of train

[CURVY SIZE CHART](#)

[16W](#) [18W](#) [20W](#) [22W](#) [24W](#) [26W](#) [28W](#) [30W](#) [32W](#)

## Elaine

UR631



- Ivory/Skin

\$645.00

mikado ballgown with basque waist, skin cleavage, pockets, buttons to end of train

[CURVY SIZE CHART](#)

[16W](#) [18W](#) [20W](#) [22W](#) [24W](#) [26W](#) [28W](#) [30W](#) [32W](#)

## Shay

UR632



- Ivory

\$795.00

fit-n-flare gown with beaded ivory lace and sequins over ivory tulle, chantilly lace, ivory stretchy lining, beaded spaghetti straps, buttons to end of train

[CURVY SIZE CHART](#)

[16W](#) [18W](#) [20W](#) [22W](#) [24W](#) [26W](#) [28W](#) [30W](#) [32W](#)

## Tinsley

UR633



- Ivory

\$695.00

crepe a-line gown with corset bodice and basque waist, slit, buttons to end of train

[16W](#) [18W](#) [20W](#) [22W](#) [24W](#) [26W](#) [28W](#) [30W](#) [32W](#)

## Tinsley-SL S M L

UR633SL

 Ivory**\$79.00**

crepe-chiffon off shoulder bishop sleeves

[CURVY SIZE CHART](#)

## Goldie

UR634

 Ivory**\$795.00**

fit n flare gown with strapless sweetheart neckline in all over beaded embroidered tulle with sequins

[CURVY SIZE CHART](#)

## Goldie-DT

UR634DT

 Ivory**\$575.00**

removable mikado overdress with buttons to end of train

[CURVY SIZE CHART](#)

## Halsey

UR635

 Ivory**\$795.00**

ballgown with satin corset bodice with basque waist, pearl and crystal peek-a-boo beading, ivory tulle skirt, ivory matte lining, buttons to end of train

[CURVY SIZE CHART](#)

## Waverly

UR636

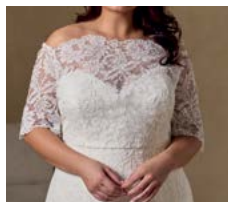
 Ivory/Sand**\$995.00**

mermaid gown with ivory corded lace over ivory tulle, sand stretchy lining, buttons to end of train

[CURVY SIZE CHART](#)

## Waverly-JK 16W 18W 20W 22W 24W 26W 28W 30W 32W

UR636JK

 Ivory**\$149.00**

corded lace off shoulder 3/4 length sleeve jacket

[CURVY SIZE CHART](#)

# top reordering carryover styles

## Elsie

UR527



[16W](#) [18W](#) [20W](#) [22W](#) [24W](#) [26W](#) [28W](#) [30W](#) [32W](#)

Ivory

\$595.00

A-Line gown in ivory Crepe with ruffled bodice, pockets, buttons to end of train.

[CURVY SIZE CHART](#)

## Liz

UR471



[16W](#) [18W](#) [20W](#) [22W](#) [24W](#) [26W](#) [28W](#) [30W](#) [32W](#)

Ivory/Skin

\$785.00

Satin ballgown with beaded ivory lace and sequins, skin illusion back, buttons to end of train, pockets.

[CURVY SIZE CHART](#)

## Bria

UR535



[16W](#) [18W](#) [20W](#) [22W](#) [24W](#) [26W](#) [28W](#) [30W](#) [32W](#)

Ivory/Champagne/Dust/Sand/Skin  
 Ivory/Ivory/Skin

\$695.00

A-Line gown with beaded lace and sequins over ivory tulle, champagne tulle, dust matte lining, buttons to end of train.

[CURVY SIZE CHART](#)

## Yvonne

UR467



[16W](#) [18W](#) [20W](#) [22W](#) [24W](#) [26W](#) [28W](#) [30W](#) [32W](#)

Ivory/Skin

\$795.00

Crepe fit-n-flare gown with ivory lace, sequins and 3D appliqués, skin illusion back and cap sleeves, buttons to end of illusion train.

[CURVY SIZE CHART](#)

## Avril

UR526



[16W](#) [18W](#) [20W](#) [22W](#) [24W](#) [26W](#) [28W](#) [30W](#) [32W](#)

Ivory/Champagne/Skin

\$695.00

Fit-n-Flare gown with beaded ivory lace and sequins over ivory tulle, champagne-skin unlined back.

[CURVY SIZE CHART](#)

## Angel

UR522



16W  18W  20W  22W  24W  26W  28W  30W  32W

- Ivory/Champagne/Dust/Skin
- Ivory/Ivory/Skin

**\$695.00**

A-Line gown with ivory lace and sequins over ivory tulle, champagne tulle, dust matte lining, ivory-skin long bishop sleeves, buttons to end of train.

[CURVY SIZE CHART](#)

## Addison

UR473



16W  18W  20W  22W  24W  26W  28W  30W  32W

- Ivory/Skin

**\$675.00**

Ivory Crepe A-line gown with three incorporated beaded belts, skin cleavage, buttons to end of train, pockets.

[CURVY SIZE CHART](#)

## Kenzie

UR468



16W  18W  20W  22W  24W  26W  28W  30W  32W

- Ivory

**\$745.00**

Satin ballgown with ivory lace on bodice, buttons to end of train, pockets.

[CURVY SIZE CHART](#)

**DESCRIPTION REFERS TO SAMPLE COLOR****TOTAL UNITS:** \_\_\_\_\_ **TOTAL AMOUNT:** \_\_\_\_\_**OBSERVATIONS/INSTRUCTIONS:**


---



---



---

\_\_\_\_\_  
**DATE:**\_\_\_\_\_  
**SIGNATURE:****SUBJECT TO FINAL APPROVAL.**

In order to expedite your sample dresses, Eddy K reserves the right to substitute one size, up or down.

A DIVISION OF EDDY K

540 Rue de Beauharnois Ouest, suite #203, Montreal, QC, Canada H2N 1L2

TEL.: 1 877 678 3235 / 514 223 9345 FAX: 514 223 9346

info@eddykbridals.com

Contact your sales representative & send your order form.

## SENIOR OPERATIONS MANAGER:

**Dave Carpenter** | Dave@eddykbridals.com | 516.567.0033 | Missouri

## NATIONAL SALES MANAGER | USA &amp; CANADA:

**Katie Kilbride** | Katie@eddykbridals.com | 910.583.6837 | Illinois, Indiana, Iowa, Kansas, Kentucky, Michigan, Minnesota, Nebraska, Ohio, Oklahoma, Rhode Island, South Dakota, Virginia, Wisconsin

## SALES TEAM:

**Robin Medina** | Robin@eddykbridals.com | 303.810.1661 | Alabama, Colorado, Connecticut, Delaware, Maine, Maryland, Montana, Nevada, New Hampshire, New Jersey, New Mexico, North Carolina, Pennsylvania, Vermont, Wyoming**Tammy Bors** | Tammy@eddykbridals.com | 561.309.4064 | Arkansas, Florida, Georgia, Louisiana, Mississippi, South Carolina, Tennessee, Texas**Kaitlin Horvath** | kaitlin@eddykbridals.com | 848.219.3622 | New York, West Virginia, Arizona, California, Idaho, Massachusetts, North Dakota, Oregon, Utah, Washington + Canada